

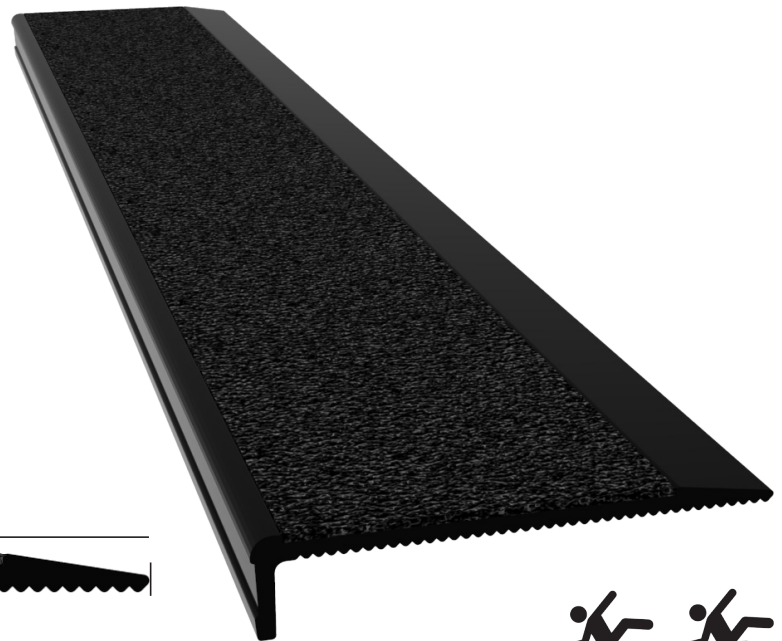
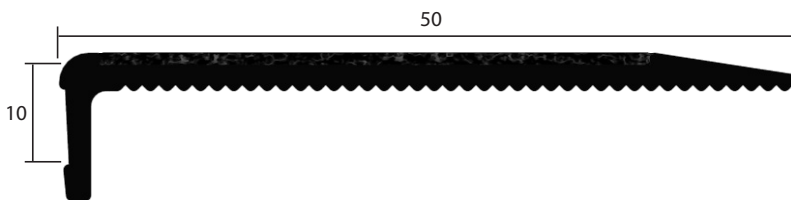
MINIMAL

MINIMAL 37

SQUARE NOSE

DIMINISHING TYPE (50X10MM)

BLACK ANODISED / BLACK INSERT



SPECIFICATION

M37-SN-DT(50x10)BA/BLACK

MINIMAL 37

SQUARE NOSE

DIMINISHING TYPE

OVERALL DIMENSIONS 50x10 mm

BLACK anodised aluminium

BLACK insert

FEATURES

- AS 1428.1:2009 compliant design with a black colour providing a high degree of luminance contrast against light to mid surrounding substrates*
- AS 4568:2013 P5 slip resistance classification - rated for internal & external environments
- Black anodised as standard
- Concealed fixings
- Diminishing / tapered back edge removes trip hazard potential
- Supplied cut to length & with countersunk holes pre-drilled
- Suitable stainless steel fixings & adhesives available for substrates/floor coverings including concrete, tile and timber
- Manufactured in Australia by Safety Stride Pty. Ltd. under a strict internal quality program which guarantees dependable output quality

* This product is compliant to AS 1428.1:2009 so long as an insert colour offering a minimum of 30% luminance contrast to the surrounding colour is specified. Please contact Safety Stride Pty Ltd for assistance.

