

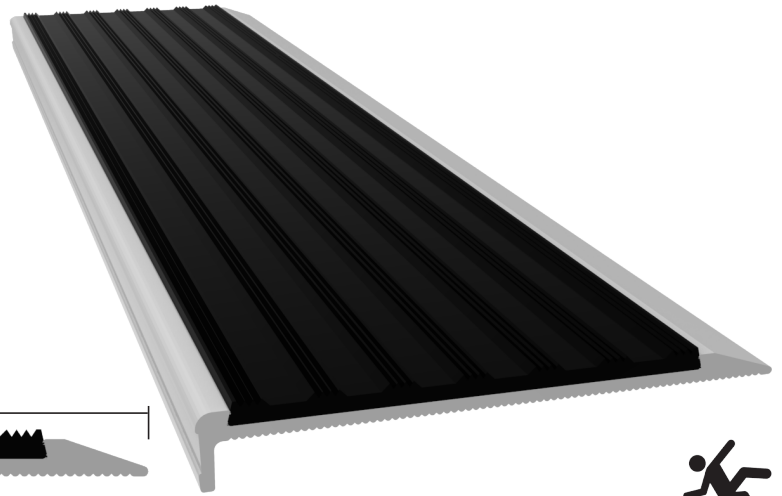
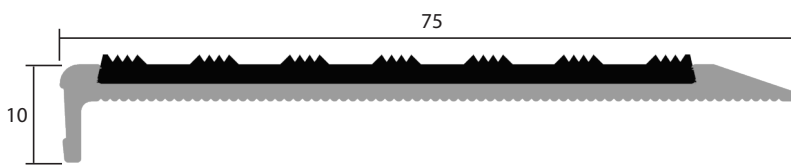
STANDARD

STANDARD 60

SQUARE NOSE

DIMINISHING TYPE (75X10MM)

CLEAR ANODISED / BLACK PVC INSERT



SPECIFICATION

S60-SN-DT(75x10)CA/BLACK

STANDARD 60

SQUARE NOSE

DIMINISHING TYPE

OVERALL DIMENSIONS 75x10 mm

CLEAR anodised aluminium

BLACK PVC insert

FEATURES

- AS 1428.1:2009 compliant design with a black colour providing a high degree of luminance contrast against light to mid surrounding substrates*
- Retro-fit - intended for installation onto an existing substrate e.g. concrete, tile, timber, carpet
- Commercial grade stair nosing offering an excellent balance between functionality, aesthetics & price
- Slip resistance suitable for internal applications - fully UV stabilised
- Recycable (made from aluminium and thermoplastic materials)
- Supplied cut to length & with countersunk holes pre-drilled
- Complementary fixings & adhesives available
- Manufactured in Australia by Safety Stride Pty. Ltd. under a strict internal quality program which guarantees dependable output quality

* This product is compliant to AS 1428.1:2009 so long as an insert colour offering a minimum of 30% luminance contrast to the surrounding colour is specified.
Please contact Safety Stride Pty Ltd for assistance.



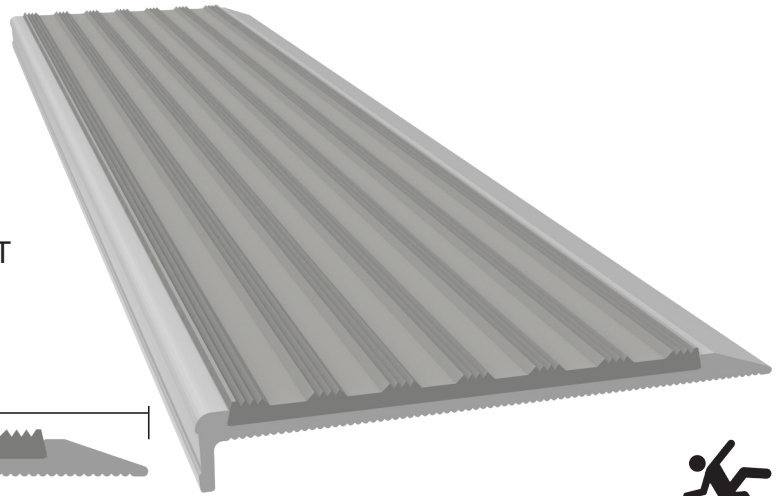
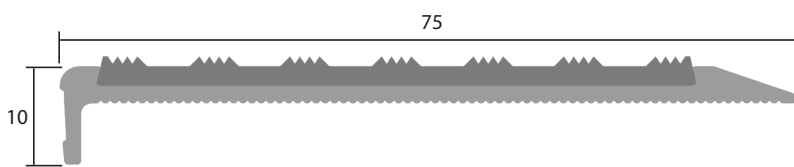
STANDARD

STANDARD 60

SQUARE NOSE

DIMINISHING TYPE (75X10MM)

CLEAR ANODISED / LIGHT GREY PVC INSERT



SPECIFICATION

S60-SN-DT(75x10)CA/LIGHT GREY

STANDARD 60

SQUARE NOSE

DIMINISHING TYPE

OVERALL DIMENSIONS 75x10 mm

CLEAR anodised aluminium

LIGHT GREY PVC insert

FEATURES

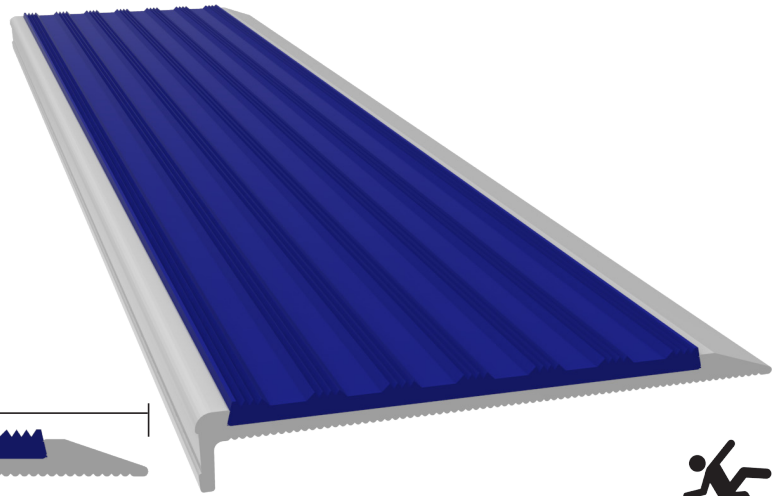
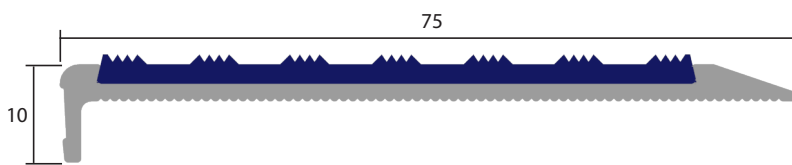
- AS 1428.1:2009 compliant design with a light grey colour providing a high degree of luminance contrast against dark to mid surrounding substrates*
- Retro-fit - intended for installation onto an existing substrate e.g. concrete, tile, timber, carpet
- Commercial grade stair nosing offering an excellent balance between functionality, aesthetics & price
- Slip resistance suitable for internal applications - fully UV stabilised
- Recyclable (made from aluminium and thermoplastic materials)
- Supplied cut to length & with countersunk holes pre-drilled
- Complementary fixings & adhesives available
- Manufactured in Australia by Safety Stride Pty. Ltd. under a strict internal quality program which guarantees dependable output quality

* This product is compliant to AS1428.1:2009 so long as an insert colour offering a minimum of 30% luminance contrast to the surrounding colour is specified.
Please contact Safety Stride Pty Ltd for assistance.



STANDARD

STANDARD 60
 SQUARE NOSE
 DIMINISHING TYPE (75X10MM)
 CLEAR ANODISED / BLUE PVC INSERT



SPECIFICATION

S60-SN-DT(75x10)CA/BLUE

STANDARD 60

SQUARE NOSE

DIMINISHING TYPE

OVERALL DIMENSIONS 75x10 mm

CLEAR anodised aluminium

BLUE PVC insert

FEATURES

- AS 1428.1:2009 compliant design with a blue colour providing a high degree of luminance contrast against light to mid surrounding substrates*
- Retro-fit - intended for installation onto an existing substrate e.g. concrete, tile, timber, carpet
- Commercial grade stair nosing offering an excellent balance between functionality, aesthetics & price
- Slip resistance suitable for internal applications - fully UV stabilised
- Recycable (made from aluminium and thermoplastic materials)
- Supplied cut to length & with countersunk holes pre-drilled
- Complementary fixings & adhesives available
- Manufactured in Australia by Safety Stride Pty. Ltd. under a strict internal quality program which guarantees dependable output quality

* This product is compliant to AS 1428.1:2009 so long as an insert colour offering a minimum of 30% luminance contrast to the surrounding colour is specified.
 Please contact Safety Stride Pty Ltd for assistance.

